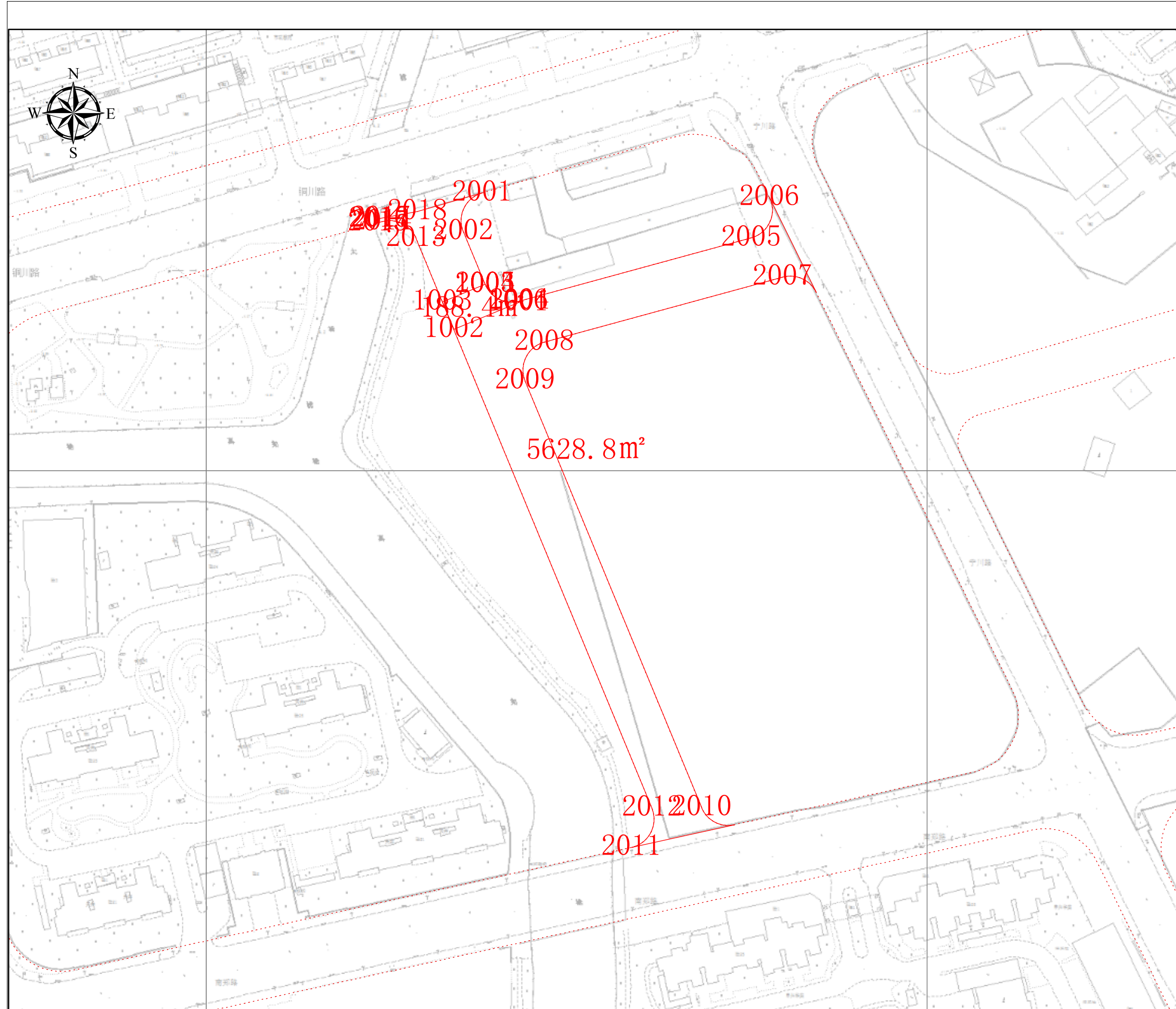


# 建设用地规划许可证附图

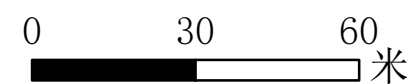


项目基本信息				
项目名称	颛桥路(铜川路-南郑路)及西川路(月牙泉路-宁川路)道路新建工程			
批文号	沪普规划资源许地(2023)24号			
证号	沪普地(2023)EA310107202300916			
勘测定界址点信息表				
点号	横坐标	纵坐标	半径(R)	边长(单位:米)
1001	-5391.632	2058.322	0	24.3
1002	-5414.087	2049.034	0	10.3
1003	-5418.024	2058.552	0	16
1004	-5403.239	2064.668	0	0.032
1005	-5403.227	2064.638	0	12.884
1006	-5391.791	2058.704	0	0.413
2001	-5404.342	2096.327	0	14.888
2002	-5410.783	2082.905	0	19.768
2003	-5403.227	2064.638	0	13.226
2004	-5391.352	2058.813	0	83.289
2005	-5311.004	2080.752	0	15.429
2006	-5304.669	2094.82	0	36.67
2007	-5300.057	2067.155	0	98.445
2008	-5382.75	2044.576	0	15.002
2009	-5389.356	2031.107	0	30.458
2010	-5328.177	1883.21	0	142.441
2011	-5352.497	1869.41	0	51.891
2012	-5345.405	1882.999	0	213.807
2013	-5427.132	2080.57	0	13.293
2014	-5439.093	2086.37	0	1.416
2015	-5440.456	2085.985	0	1.371
2016	-5440.132	2087.317	0	0.732
2017	-5439.429	2087.523	0	12.913
2018	-5426.733	2089.881	0	23.3

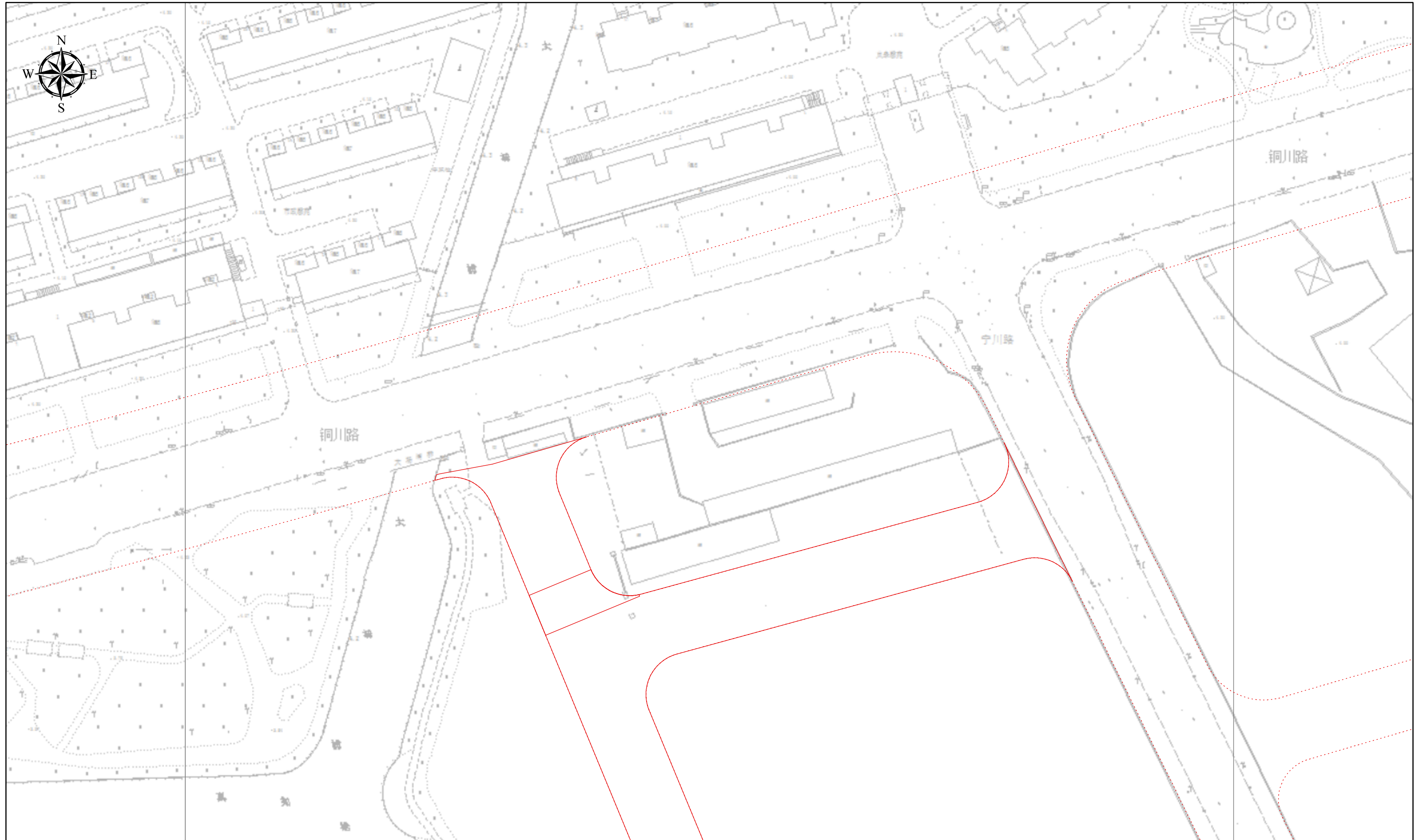
IV 11-22 / IV 10-22

上海市规划和自然资源局

2023-10-13

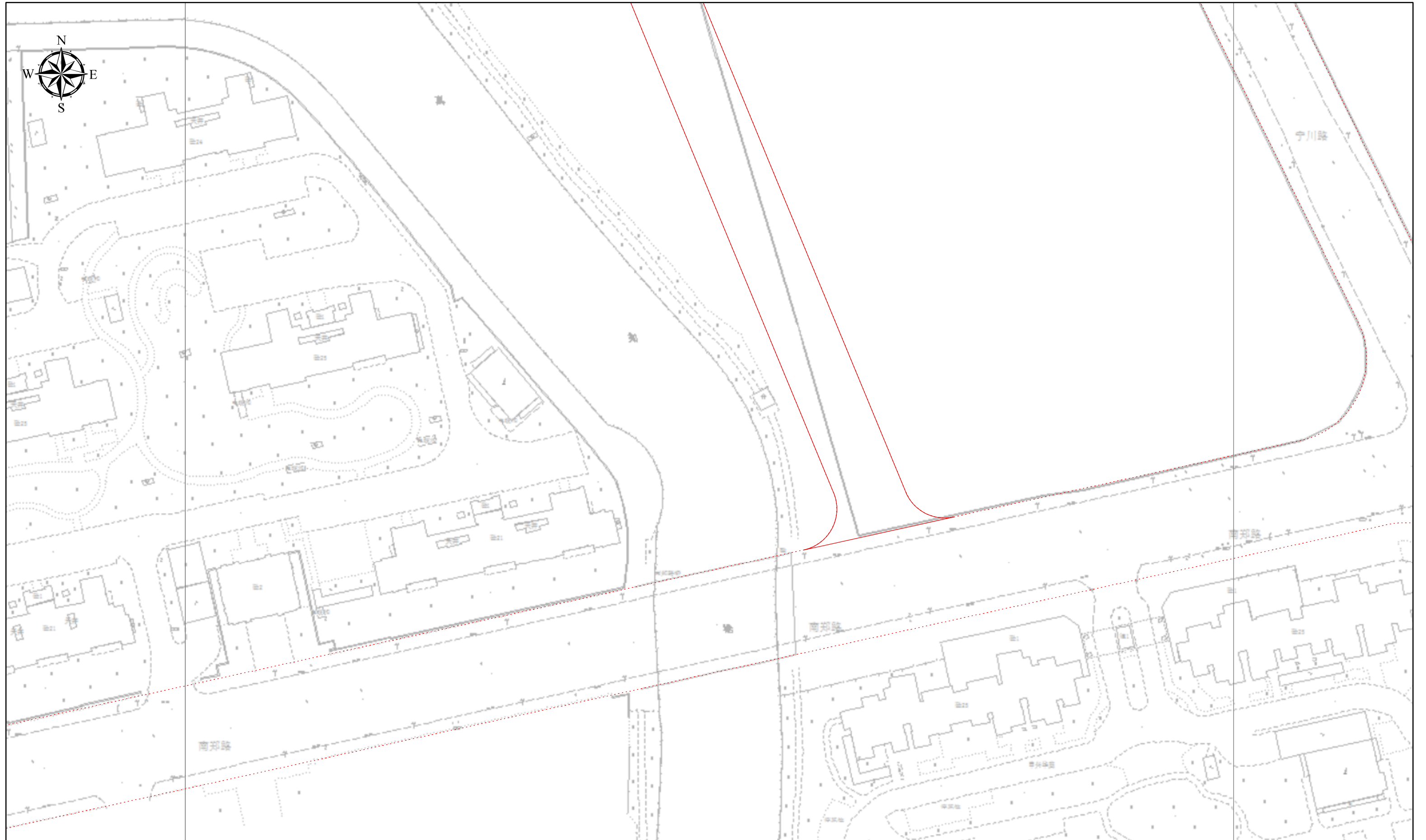


# 建设用地规划许可证附图



0 15 30 米

# 建设用地规划许可证附图



IV 10-22

上海市规划和自然资源局

2023-10-13

0 15 30 米