

# 建设用地规划许可证附图



## 项目基本信息

项目名称	普陀区真如副中心A03-01地块学校新建工程
批文号	
证号	

## 勘测定界址点信息表

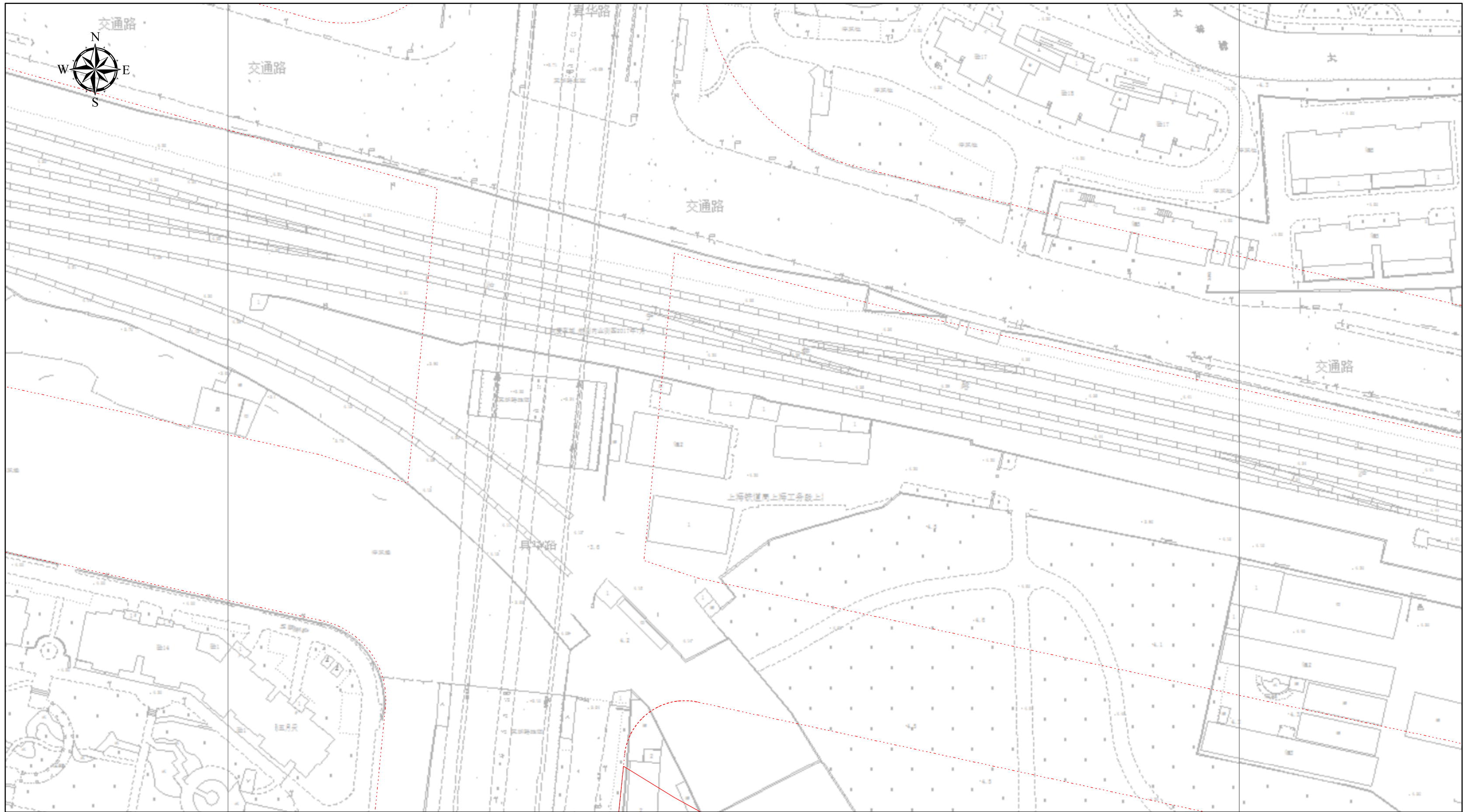
点号	横坐标	纵坐标	半径(R)	边长(单位:米)
1001	-5904.599	2987.654	0	0.127
1002	-5904.588	2987.78	0	2.417
1003	-5904.36	2990.186	0	3.891
1004	-5902.254	3011.348	0	32.171
1005	-5889.665	3003.574	0	14.796
1006	-5876.683	2996.476	0	14.796
1007	-5863.345	2990.073	0	14.796
1008	-5849.686	2984.384	0	14.796
1009	-5835.747	2979.424	0	14.796
1010	-5821.565	2975.208	0	103.873
1011	-5721.251	2948.248	0	11.908
1012	-5722.478	2936.403	0	17.025
1013	-5724.021	2917.433	0	7.079
1014	-5729.281	2918.878	0	21.327
1015	-5796.831	2908.942	0	156.343
1016	-5792.981	2798.469	0	8.403
1017	-5792.41	2791.622	0	6.95
1018	-5791.668	2784.712	0	27.561
1019	-5787.238	2757.509	0	6.931
1020	-5785.732	2750.744	0	6.752
1021	-5784.896	2744.044	0	6.895
1022	-5783.235	2737.352	0	6.888
1023	-5781.229	2730.763	0	6.895
1024	-5779.013	2724.234	0	13.847
1025	-5773.928	2711.354	0	6.894
1026	-5771.163	2705.039	0	6.895
1027	-5768.202	2698.812	0	0.783
1028	-5767.847	2698.114	0	62.575
1029	-5828.638	2683.281	0	21.213
1030	-5846.766	2694.297	0	81.911
1031	-5898.464	2906.161	0	138.63
1032	-5899.035	2908.555	0	0.378
1033	-5899.12	2908.923	0	10.059
1034	-5901.196	2918.765	0	0.044
1035	-5901.205	2918.808	0	10.443
1036	-5902.937	2929.106	0	0.037
1037	-5902.942	2929.143	0	10.48
1038	-5904.246	2939.541	0	12.047
1039	-5905.204	2951.55	0	0.03
1040	-5905.206	2951.581	0	12.039
1041	-5905.582	2963.614	0	0.038
1042	-5905.583	2963.652	0	12.054
1043	-5905.377	2975.703	0	11.24
1044	-5905.377	2975.728	0	11.951
2001	-5905.377	2975.728	0	11.259
2002	-5905.377	2975.705	0	12.054
2003	-5905.583	2963.652	0	0.038

0 40 80 米

IV 16-24 / IV 14-14  
上海市规划和自然资源局

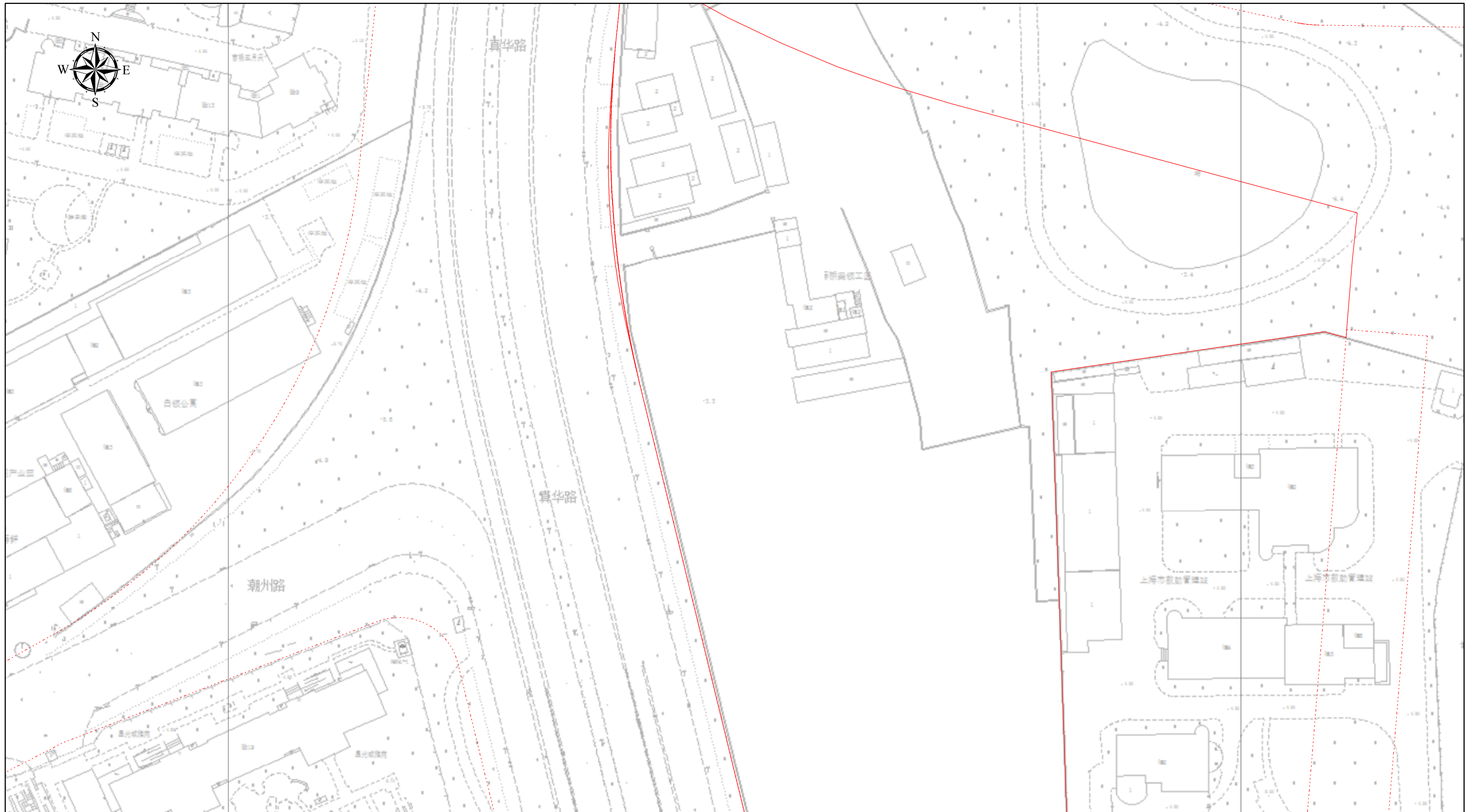
2023-11-02

# 建设用地规划许可证附图



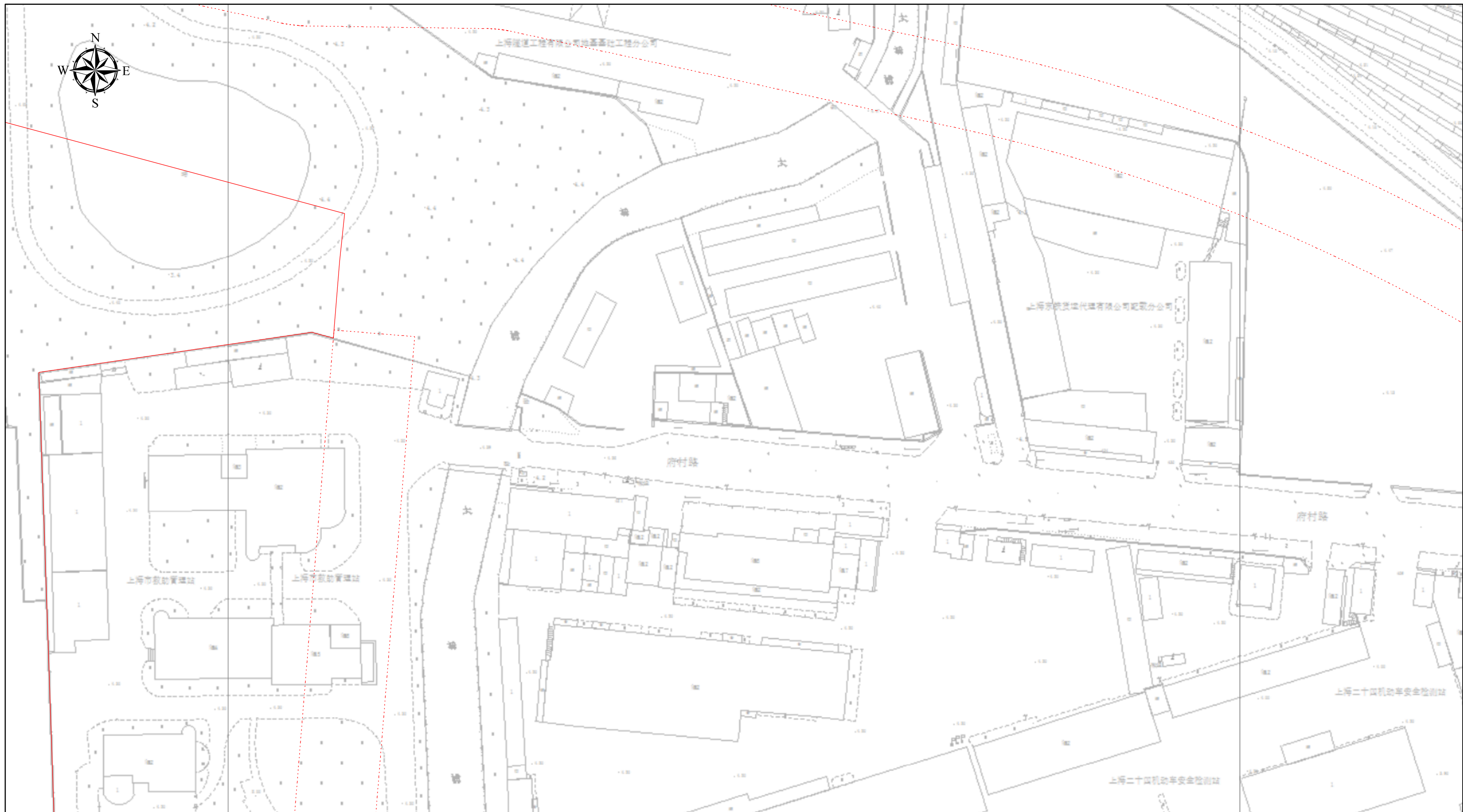
0 15 30 米

# 建设用地规划许可证附图



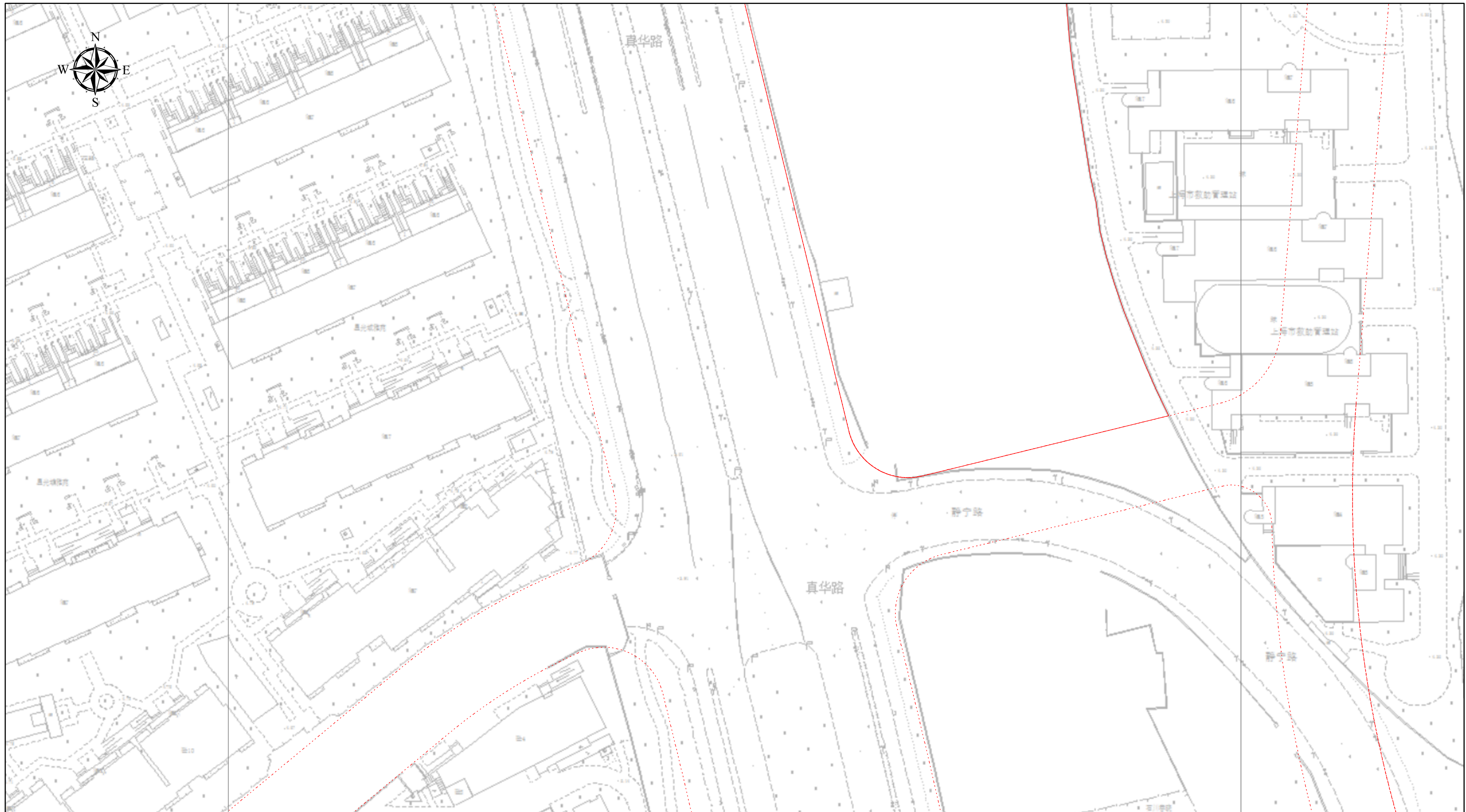
0 15 30 米

# 建设用地规划许可证附图



0 15 30 米

# 建设用地规划许可证附图



0 15 30 米